

NEW

## UDEO BOLLARD L 24Vdc

IP65 IK06 CE 

TIPOLOGIA / TYPOLOGY

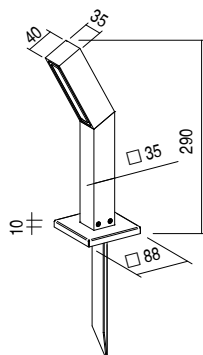
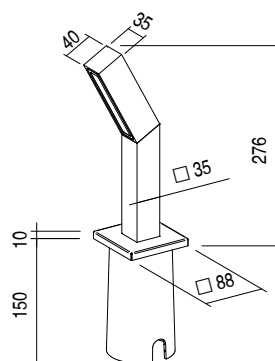
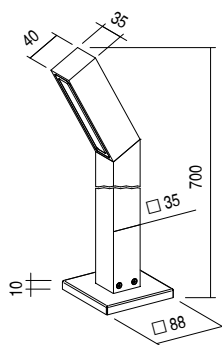
Paletto | Bollard

POSIZIONE INSTALLATIVA | INSTALLATION POSITION

A terra | Ground mounting

AMBIENTE INSTALLATIVO | INSTALLATION LOCATION

Esterno | Outdoor



UDEO BOLLARD S

H 700mm

9,5W

 kg 0,69

# NEW UDEO BOLLARD L 24Vdc

## CARATTERISTICHE ELETTRICHE | ELECTRICAL FEATURES

POTENZA ASSORBITA   POWER CONSUMPTION	9,5W
ALIMENTAZIONE   POWER SUPPLY	24Vdc
ALIMENTATORE   POWER SUPPLY UNIT	9,5W - 24Vdc non incluso   Not included
COLLEGAMENTO   CONNECTION	Parallelo   Parallel

## CARATTERISTICHE ILLUMINOTECNICHE | LIGHTING FEATURES

COLORE LED   LED COLOUR	2200K, 2700K, 3000K, 4000K, Red, Green, Blue
INDICE RESA CROMATICA CRI   CRI	>80 (2200K, 2700K, 3000K, 4000K)
BINNING	3 step MacAdam   3 MacAdam steps
OTTICHE   OPTICS	25°, 36°, 62°, Diffused
UGR	<19
FLUSSO REALE EMESSO - 3000K REAL OUTPUT FLUX	9,5W 771lm 36°
DURATA MEDIA LED   AVERAGE LED LIFE	50.000h L80 B10

## CARATTERISTICHE MECCANICHE | MECHANICAL FEATURES

PESO   WEIGHT	Kg 0,69
FINITURE   FINISHES	Bianco txt, Grigio txt, Nero txt, Corten, Antracite txt, Verde, Sand txt White, txt Grey, txt Black, Corten, txt Anthracite, Green, Sand
INSTALLAZIONE   INSTALLATION	A terra con basetta, viti (includi) A terra con kit cassaforma e viti (non inclusi), su terreno con picchetto (non incluso) On ground with base and screws (not included), ground installation with housing box kit and screws (not included), in ground with peg (not included)
MATERIALE   MATERIAL	Corpo e basetta in alluminio anticorrosivo, vetro temperato serigrafato Anticorrosive aluminium body and base, silk-screen printed tempered glass


## CARATTERISTICHE GENERALI | GENERAL FEATURES

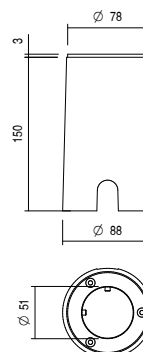
TEMPERATURA DI ESERCIZIO OPERATING TEMPERATURE	-10°C +45°C
GRADO DI PROTEZIONE   INGRESS PROTECTION	IP65
GRADO DI RESISTENZA   IMPACT RESISTANCE	IK06
GLOW WIRE TEST   GLOW WIRE TEST	960°C.
TEMPERATURA MASSIMA APPARECCHIO MAX. TEMPERATURE OF FIXTURE	40° @ Ta = 25°
CLASSE DI ISOLAMENTO   APPLIANCE CLASS	III
CALPESTABILE   WALKOVER	No
CARRABILE   DRIVE OVER	No
SICUREZZA STANDARD   STANDARD SAFETY	/
SICUREZZA FOTOBIOLOGICA PHOTOBIOLOGICAL SAFETY	GR1


NEW

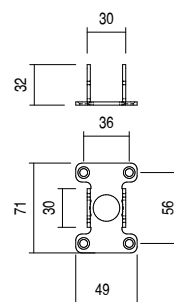
## UDEO BOLLARD L 24Vdc


## ACCESSORI | ACCESSORIES

<b>CODICE / CODE</b>	<b>CAU02</b>	
<b>TIPOLOGIA / TYPOLOGY</b>	<b>KIT Cassaforma</b> <i>KIT Housing box</i>	 kg 0,38
<b>MATERIALE   MATERIAL</b>	<b>Polipropilene e alluminio</b> <i>Prolypropylene and aluminium</i>	



<b>CODICE / CODE</b>	<b>BAU01</b>	
<b>TIPOLOGIA / TYPOLOGY</b>	<b>Basetta</b> <i>Base</i>	 kg 0,1
<b>MATERIALE   MATERIAL</b>	<b>Acciaio inox</b> <i>Stainless steel</i>	



<b>CODICE / CODE</b>	<b>PIU01</b>	
<b>TIPOLOGIA / TYPOLOGY</b>	<b>Picchetto</b> <i>Peg</i>	 kg 0,15
<b>MATERIALE   MATERIAL</b>	<b>Acciaio inox</b> <i>Stainless steel</i>	

